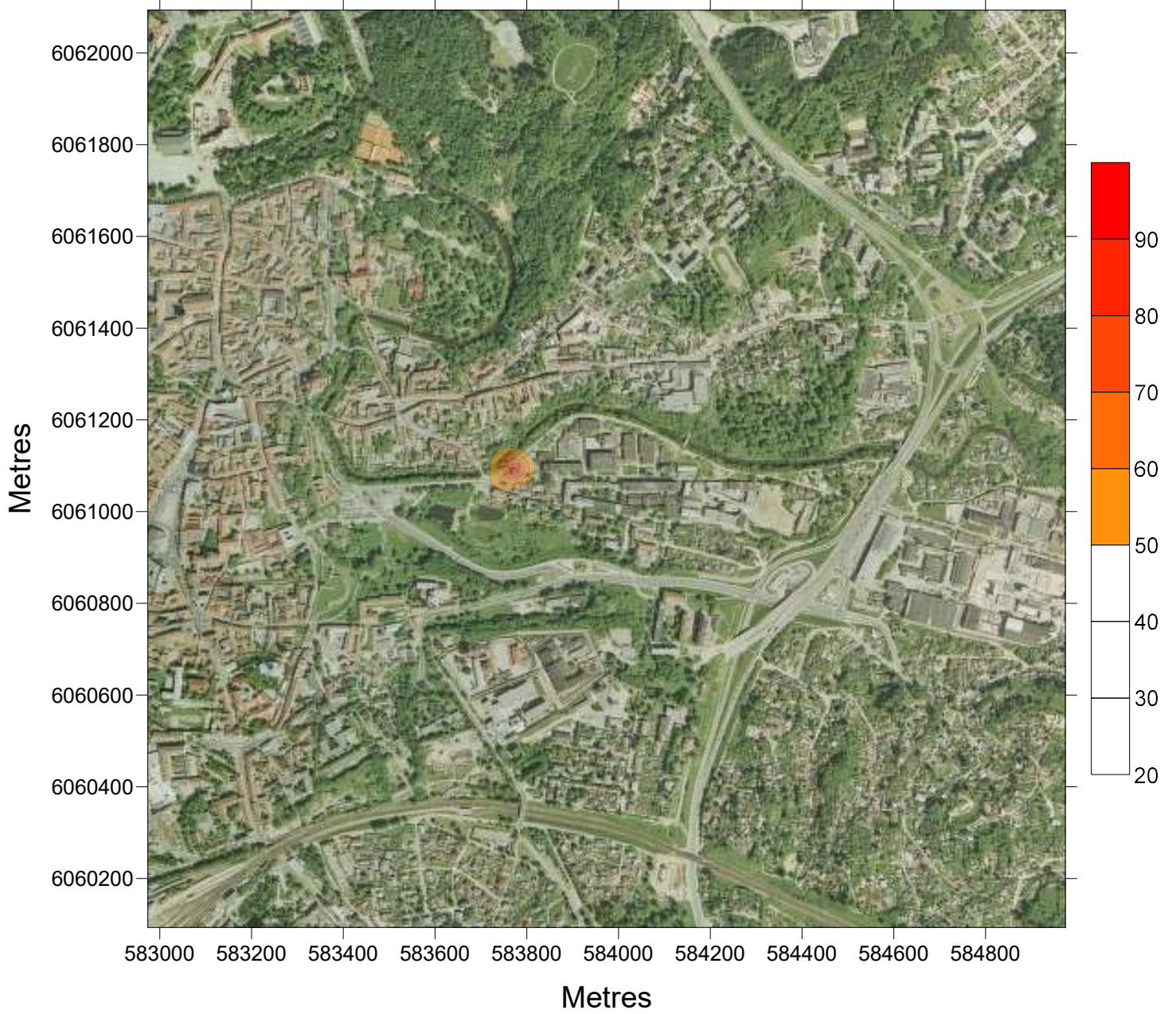


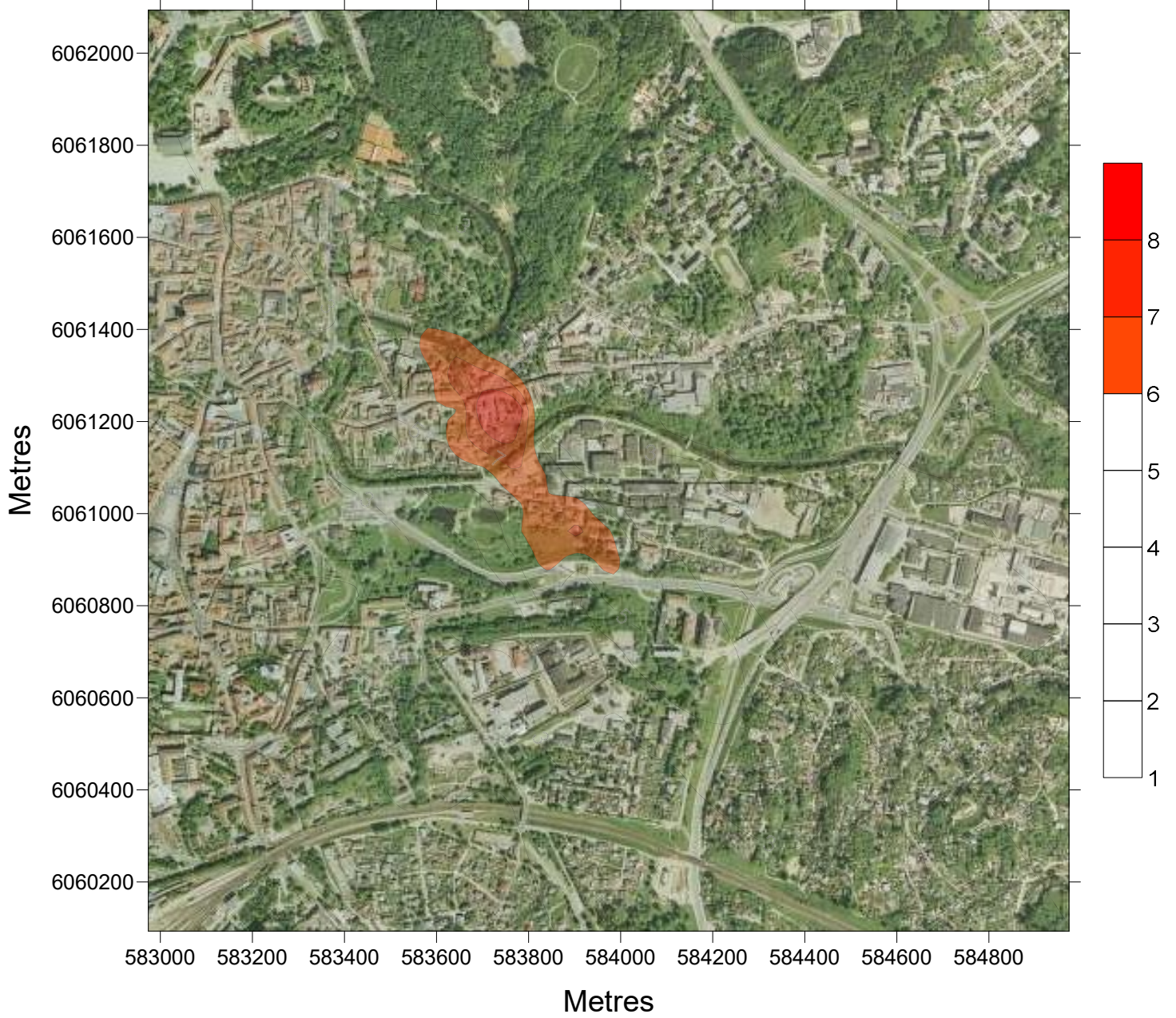
P100.00 $\mu\text{g}/\text{m}^3$ CO

BE FONO Z=1.5m r 8hrs



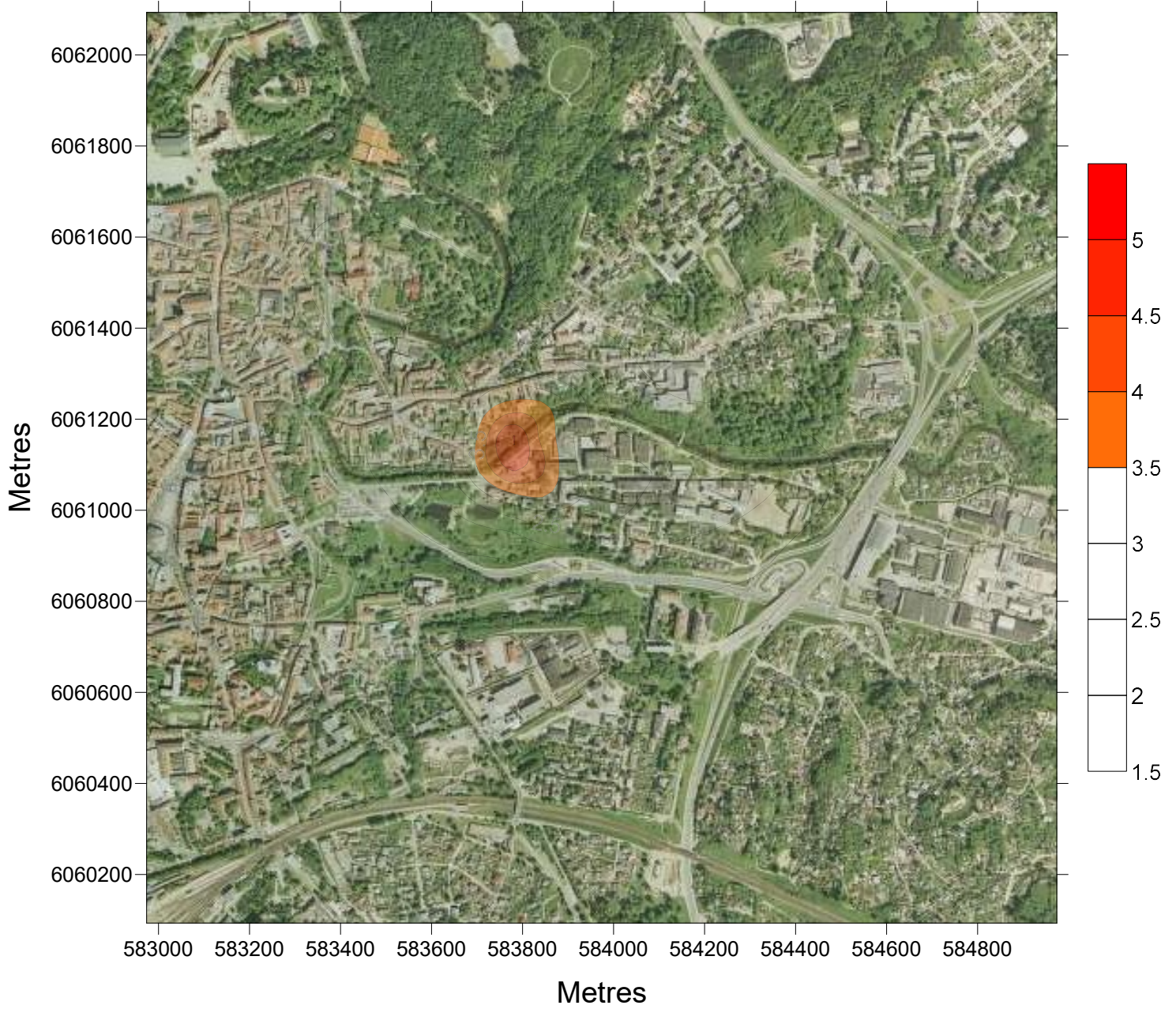
P100.00 $\mu\text{g}/\text{m}^3$ KD

BE FONO Z=1.5m - 24hrs



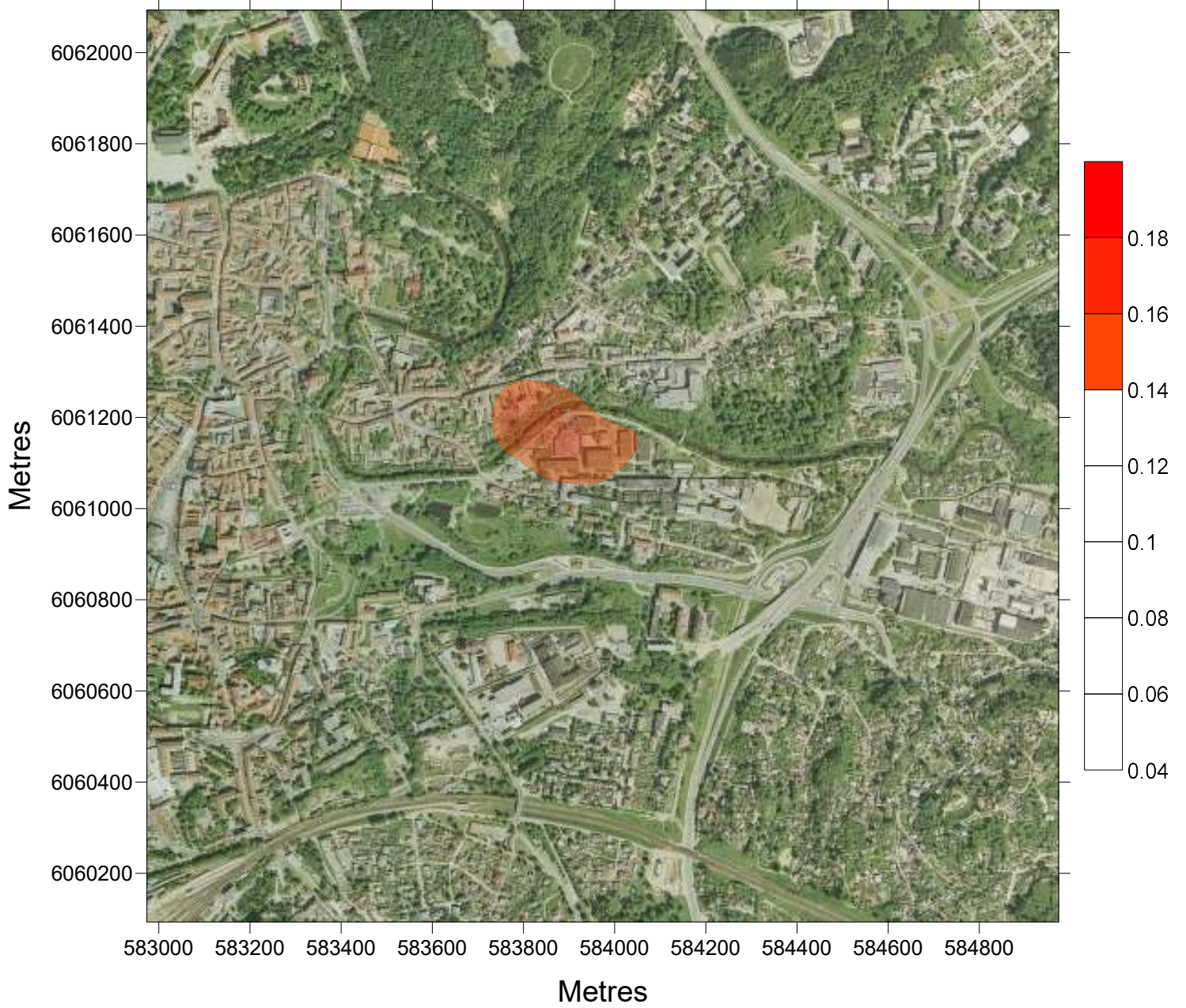
P 98.50 $\mu\text{g}/\text{m}^3$ KD

BE FONO Z=1.5m - 1hr



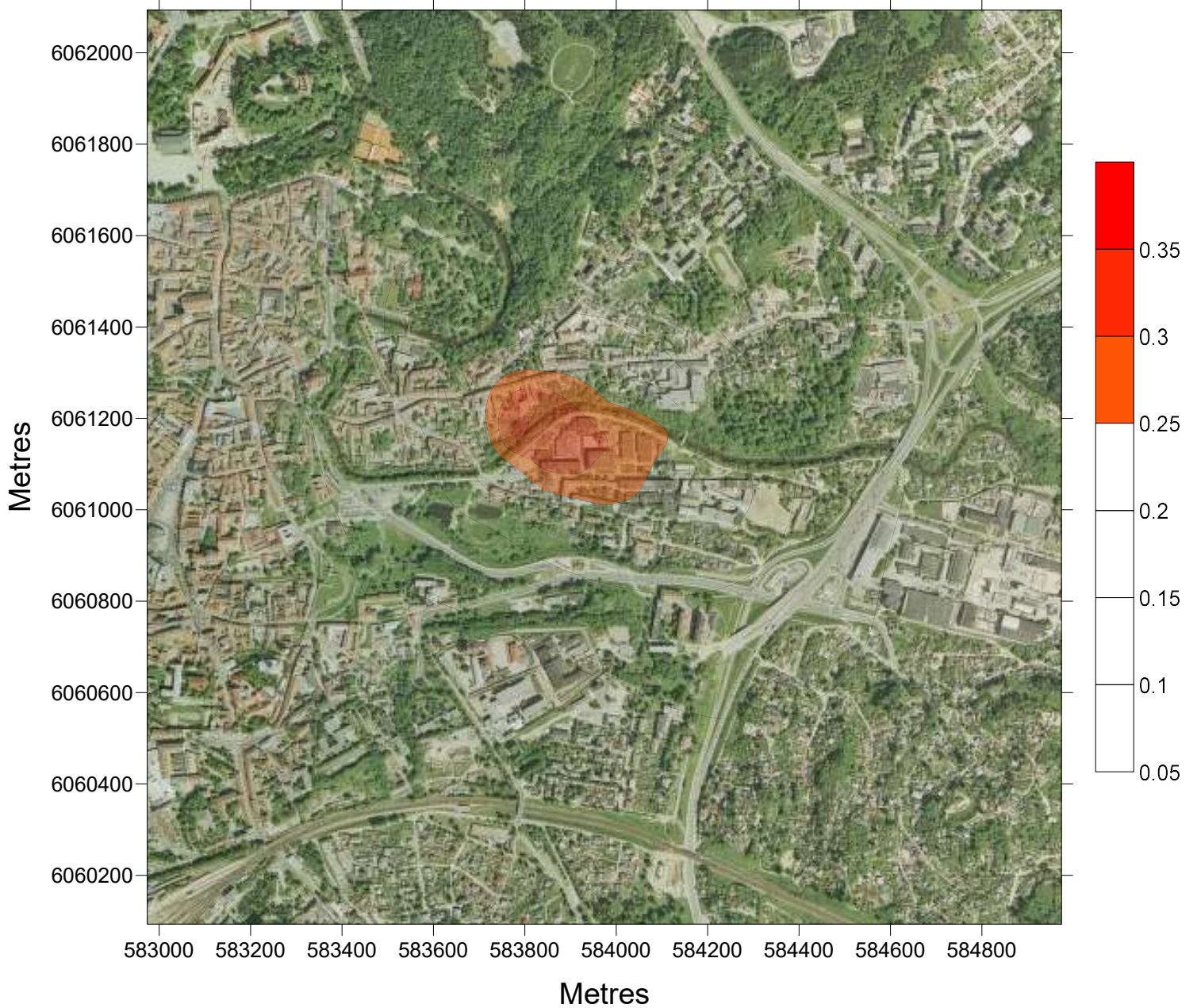
LTConc $\mu\text{g}/\text{m}^3$ KD2.5

BE FONO Z=1.5m - 1hr



LTConc $\mu\text{g}/\text{m}^3$ KD10

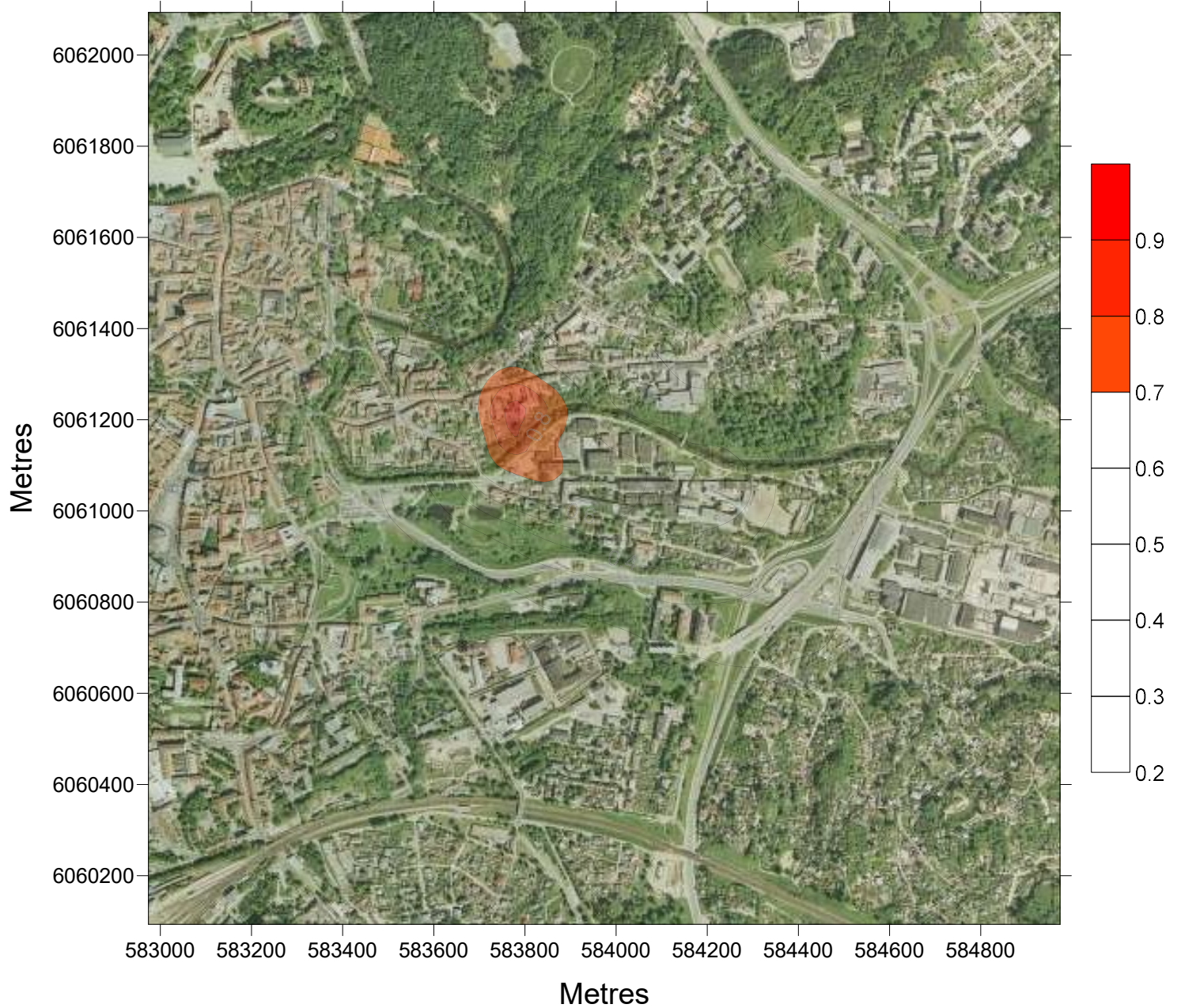
BE FONO Z=1.5m - 1hr



P 90.40 $\mu\text{g}/\text{m}^3$ KD10

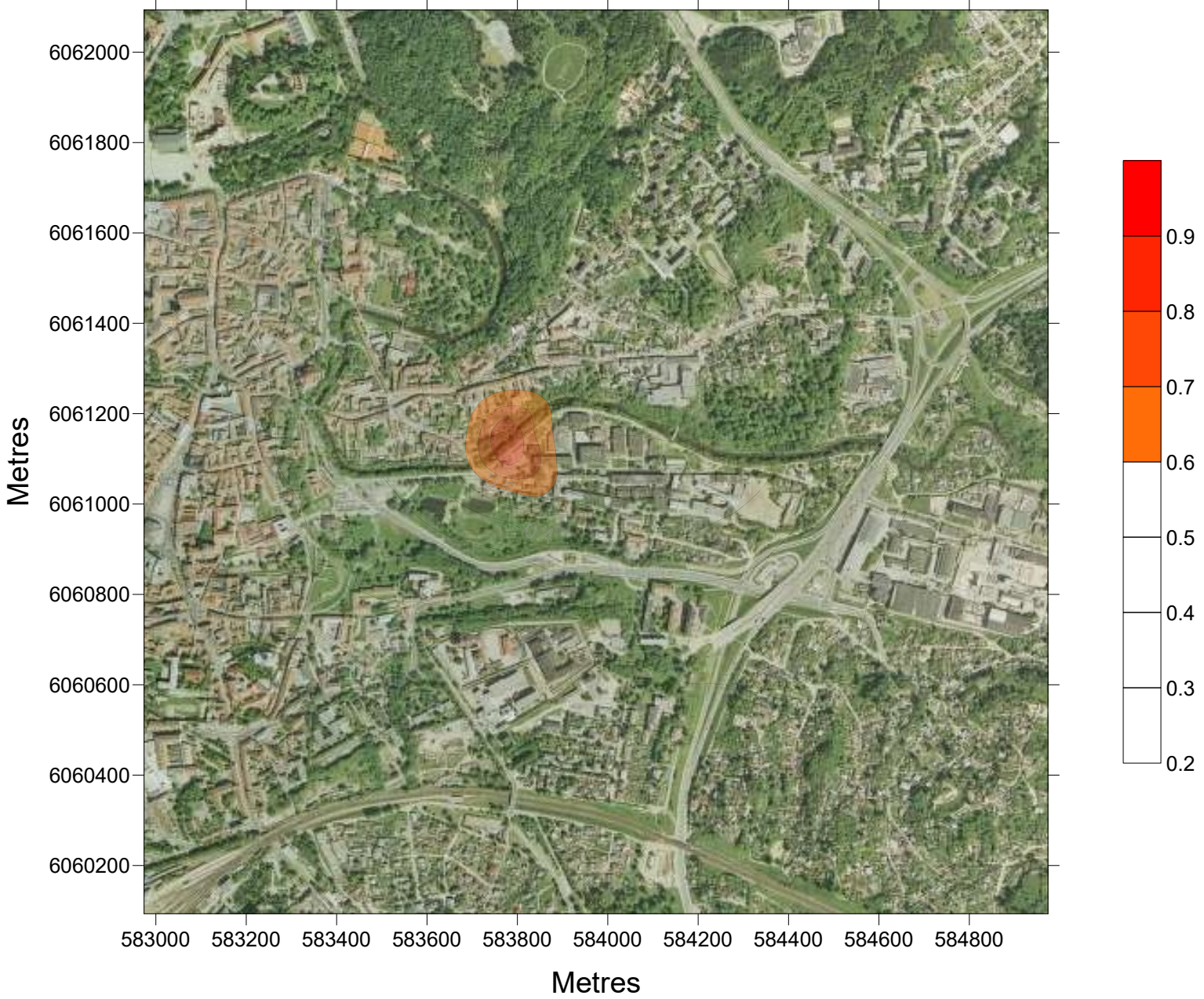
BE FONO

Z=1.5m - 24hrs



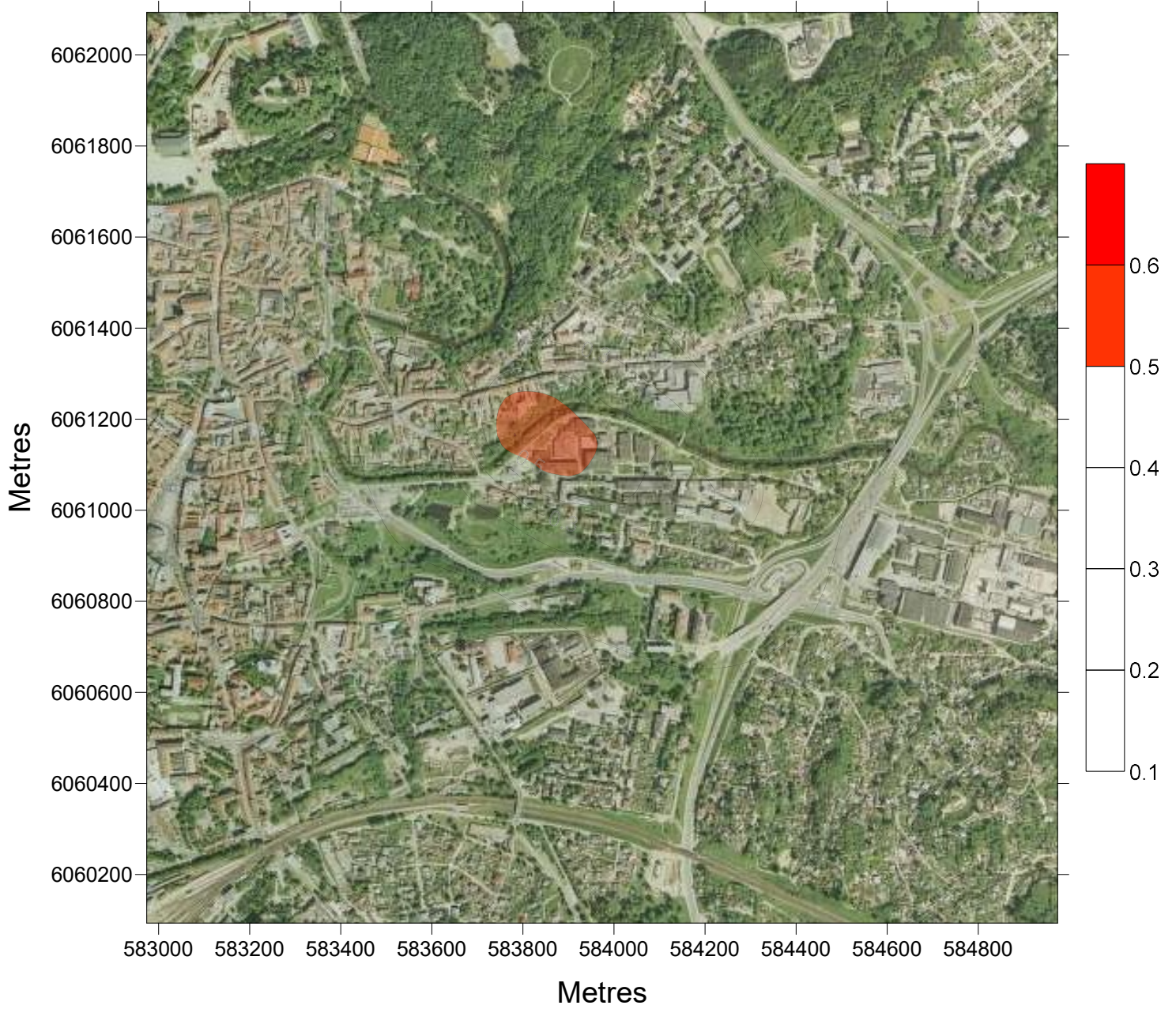
P 98.50 $\mu\text{g}/\text{m}^3$ LOJ

BE FONO Z=1.5m - 1hr



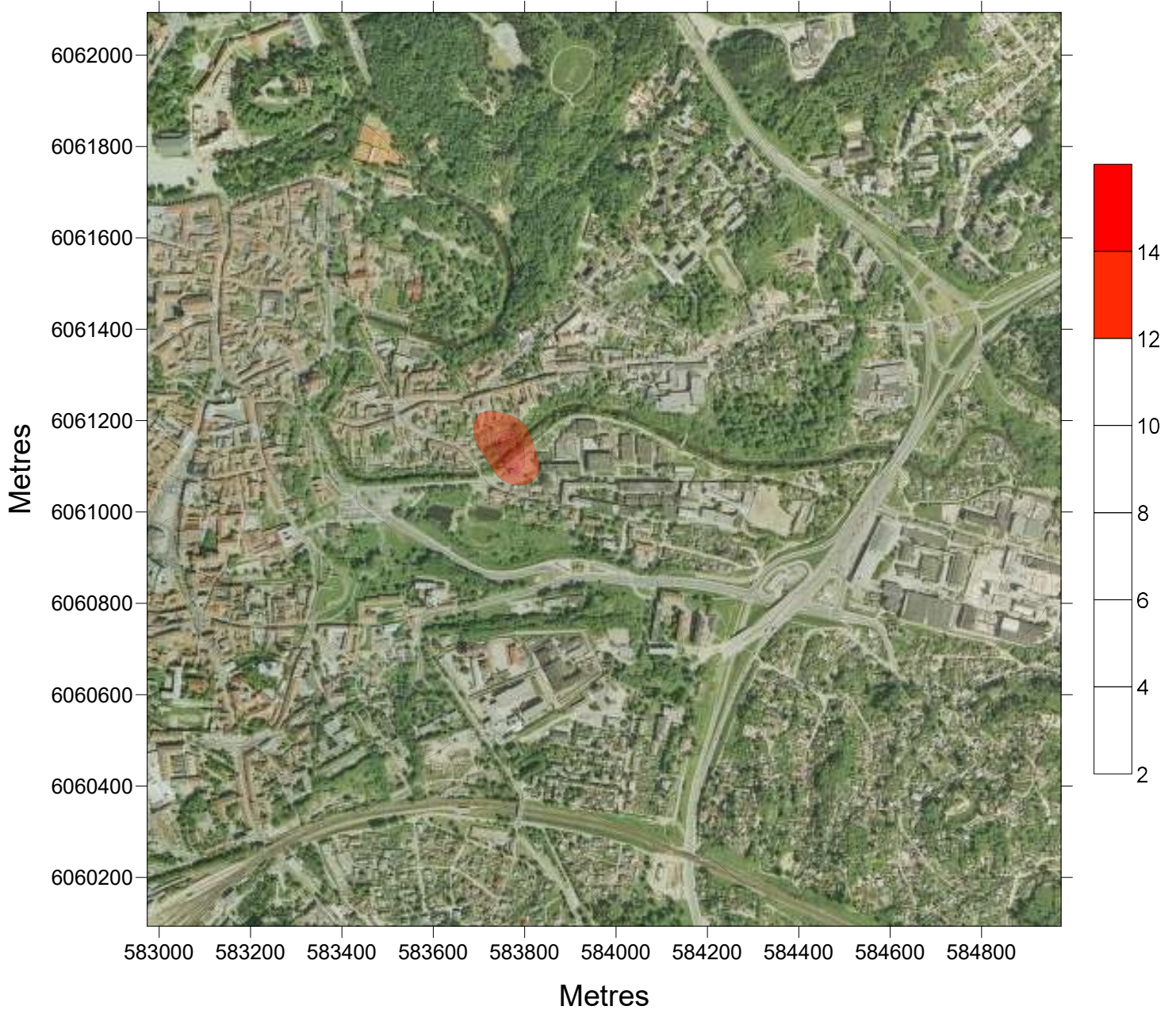
LTConc $\mu\text{g}/\text{m}^3$ NOx

BE FONO Z=1.5m - 1hr



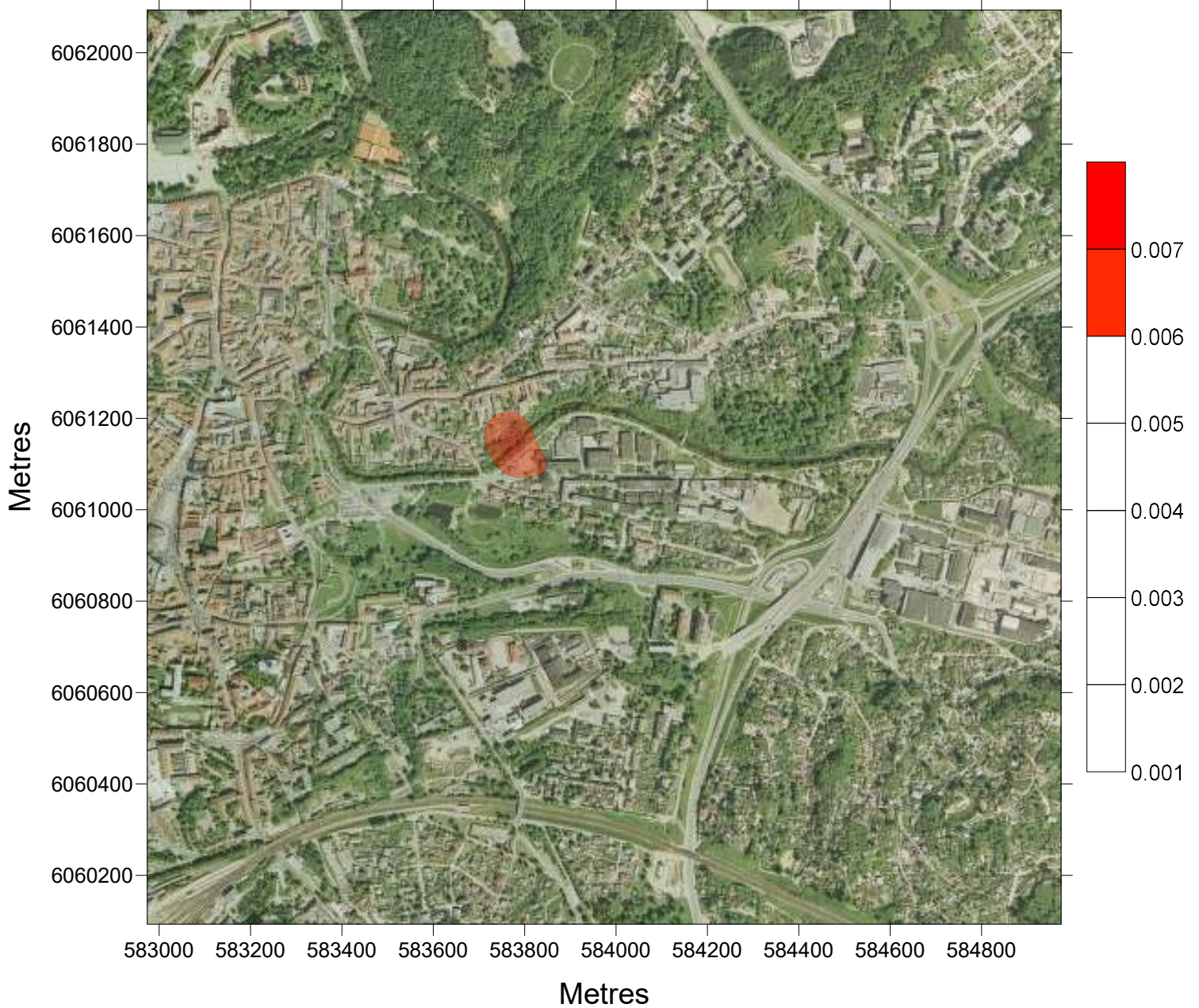
P 99.80 $\mu\text{g}/\text{m}^3$ NOx

BE FONO Z=1.5m - 1hr



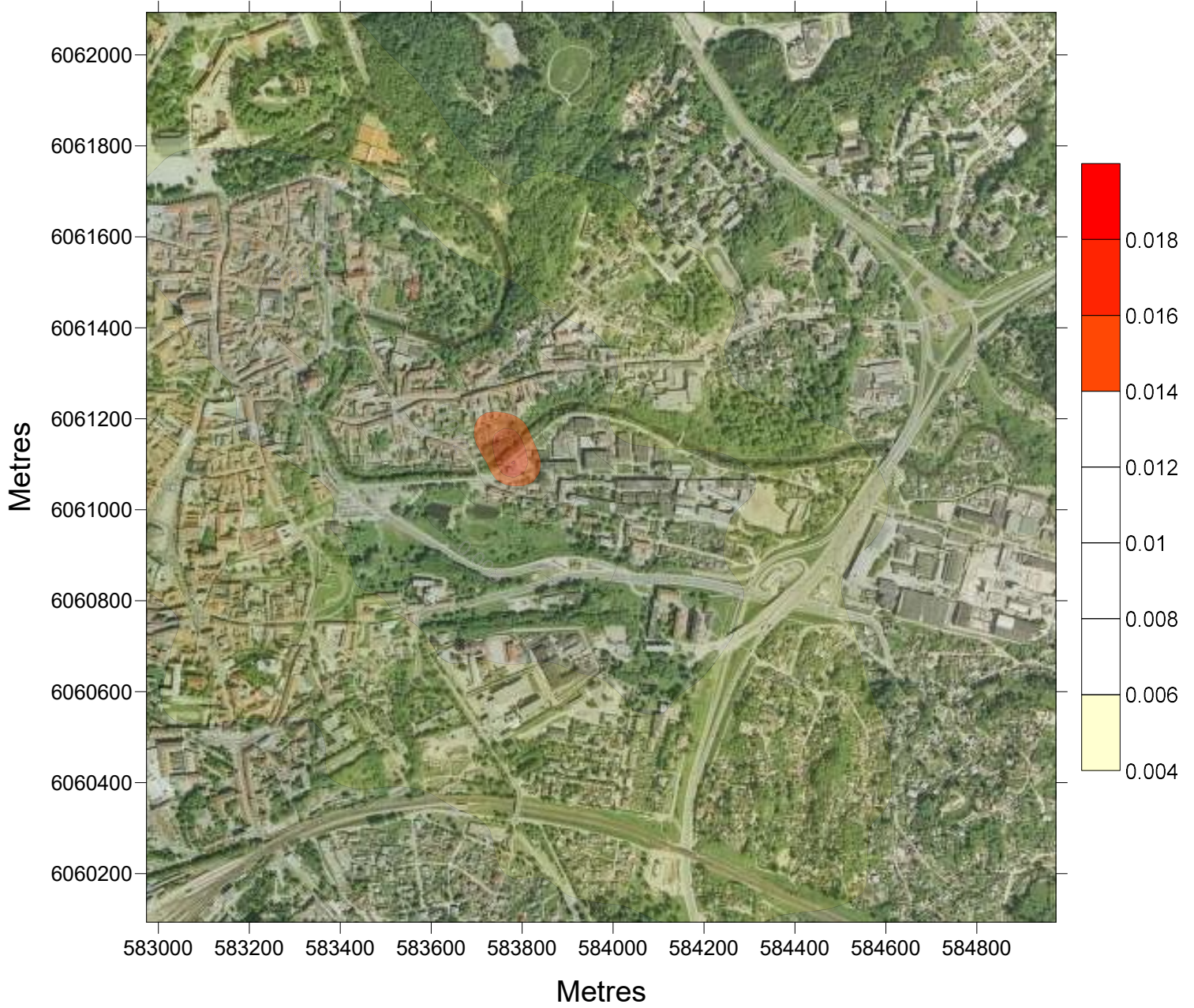
P 99.20 $\mu\text{g}/\text{m}^3$ SO₂

BE FONO Z=1.5m - 24hrs



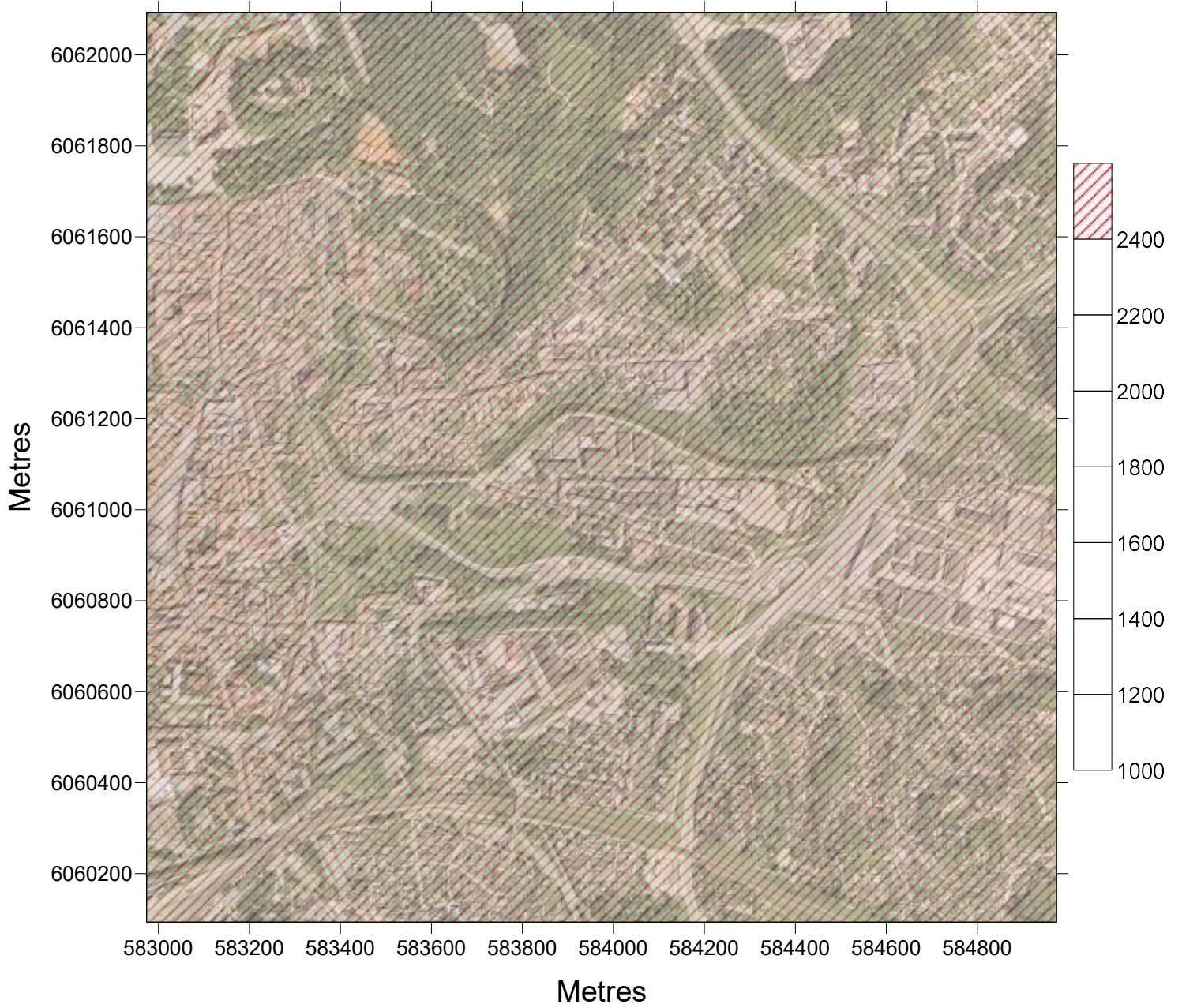
P 99.70 $\mu\text{g}/\text{m}^3$ SO₂

BE FONO Z=1.5m - 1hr



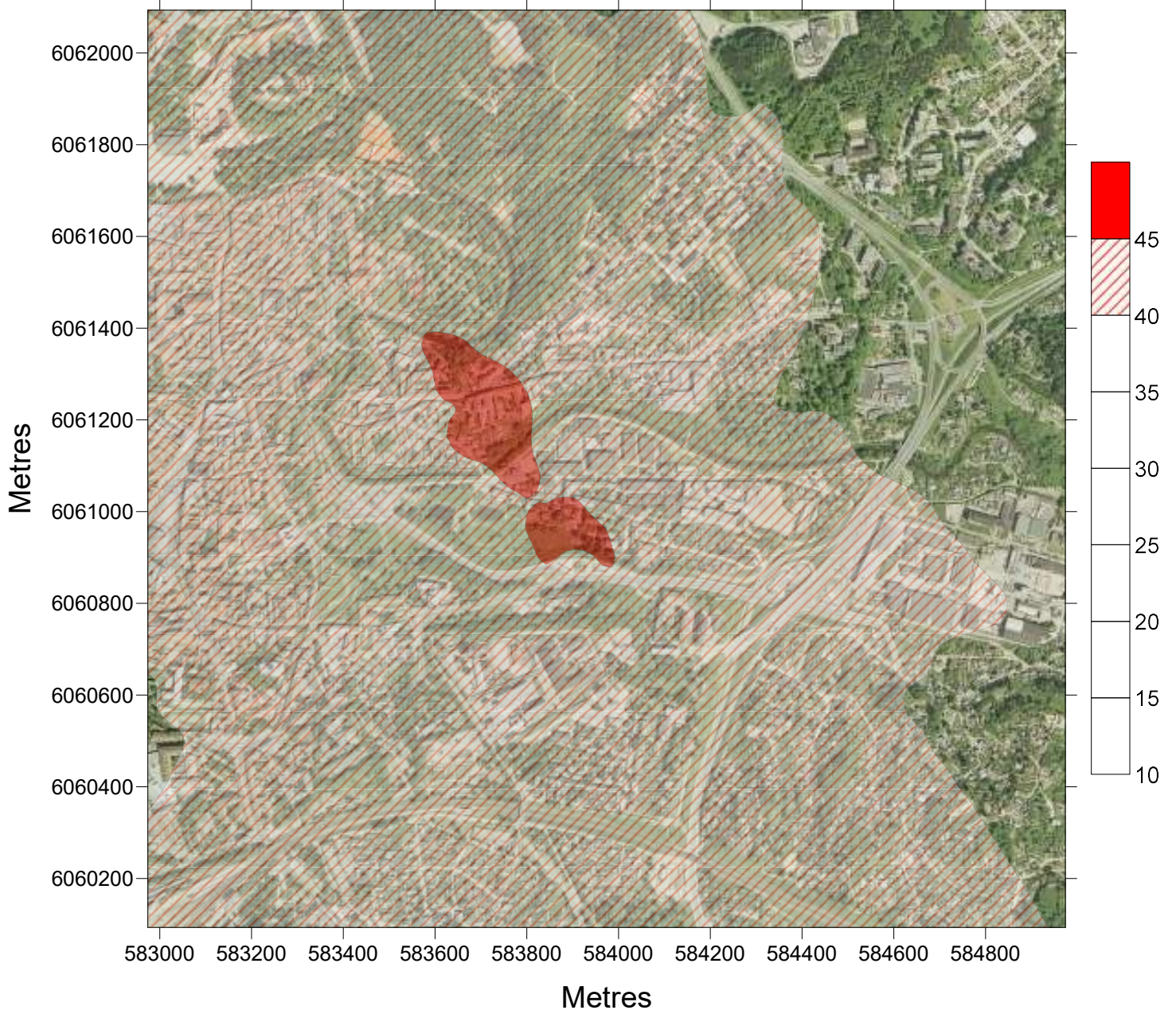
P100.00 $\mu\text{g}/\text{m}^3$ CO

All sourc Z=1.5m r 8hrs



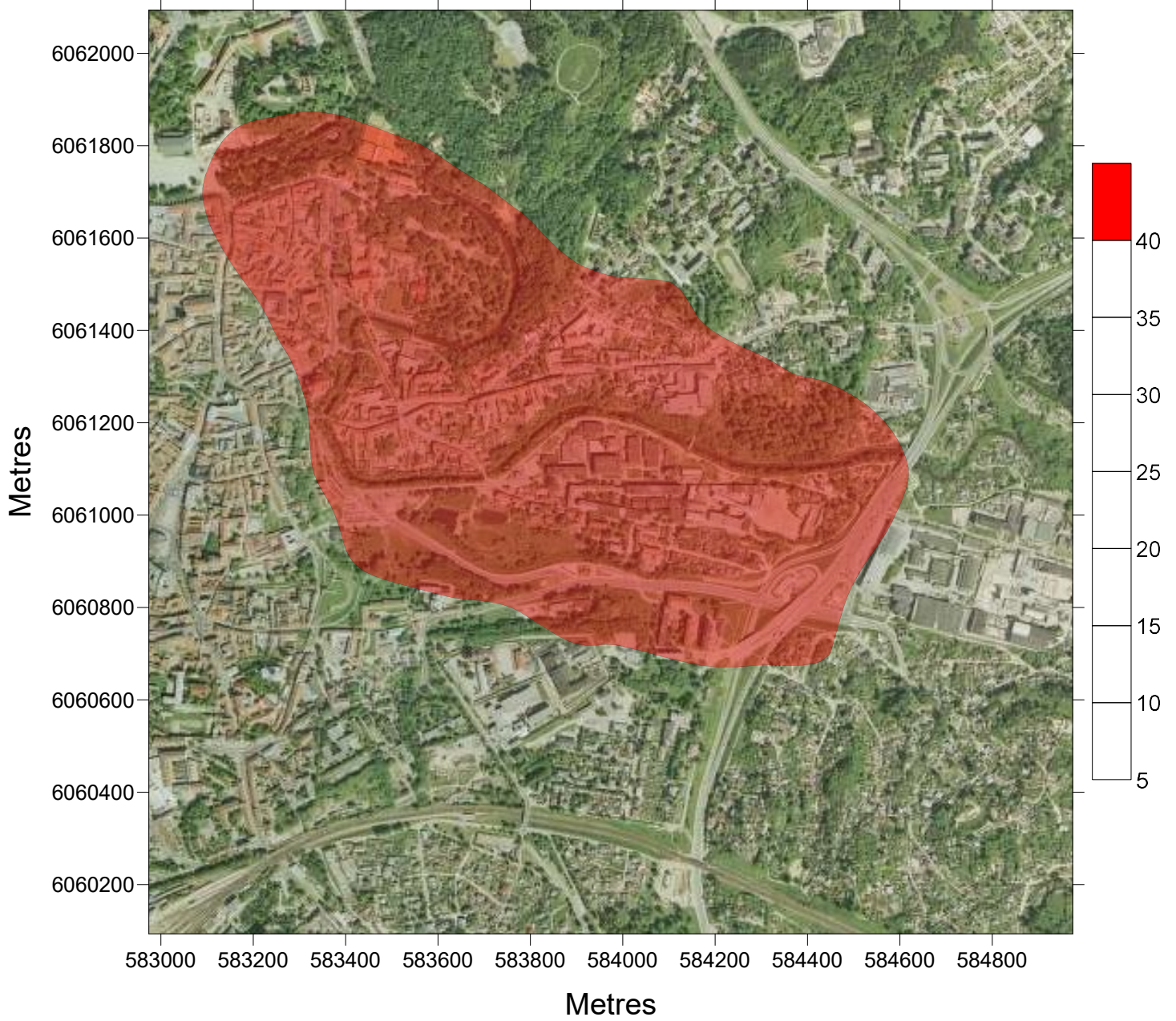
P100.00 $\mu\text{g}/\text{m}^3$ KD

All sourc Z=1.5m - 24hrs



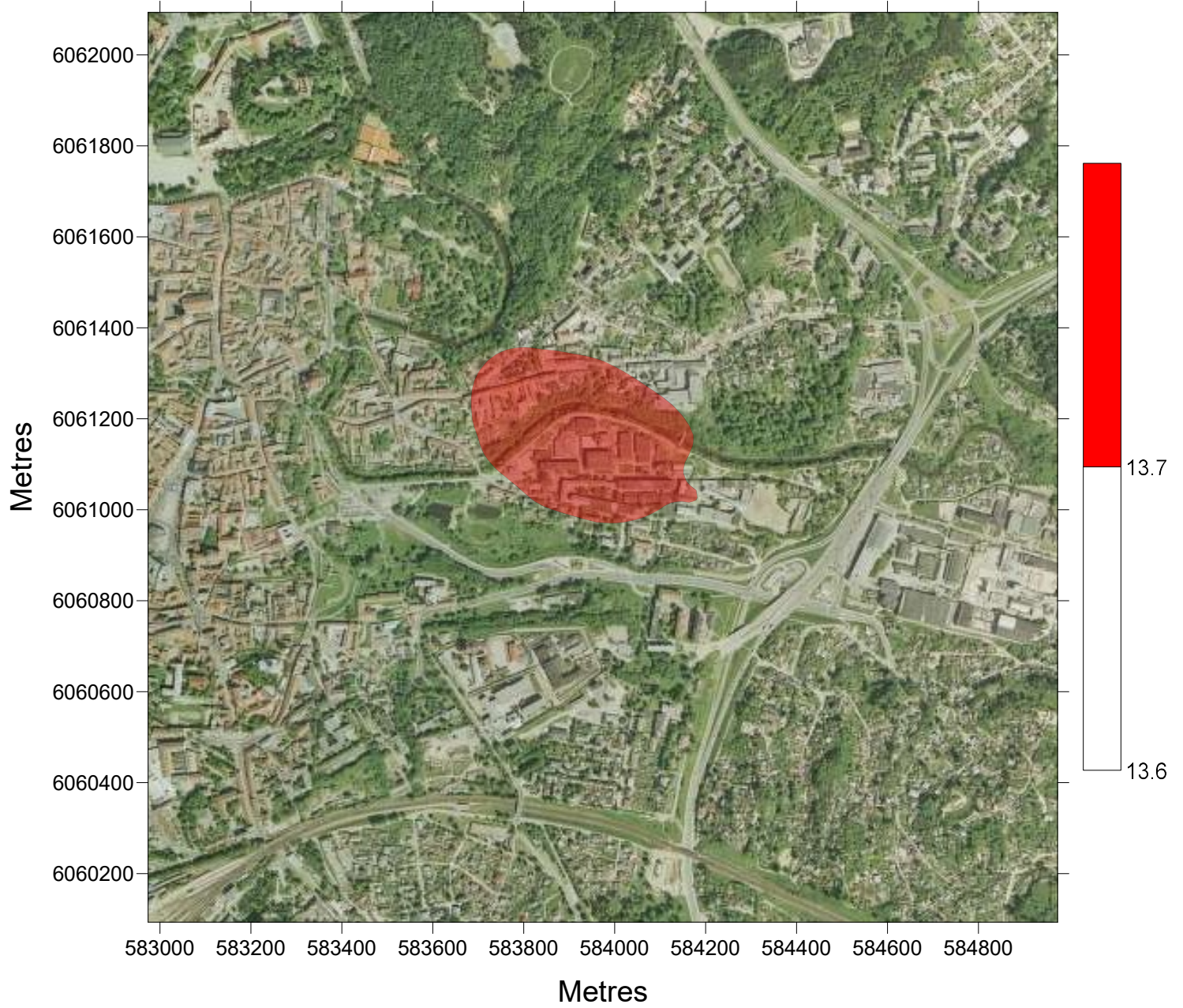
P 98.50 $\mu\text{g}/\text{m}^3$ KD

All sourc Z=1.5m - 1hr



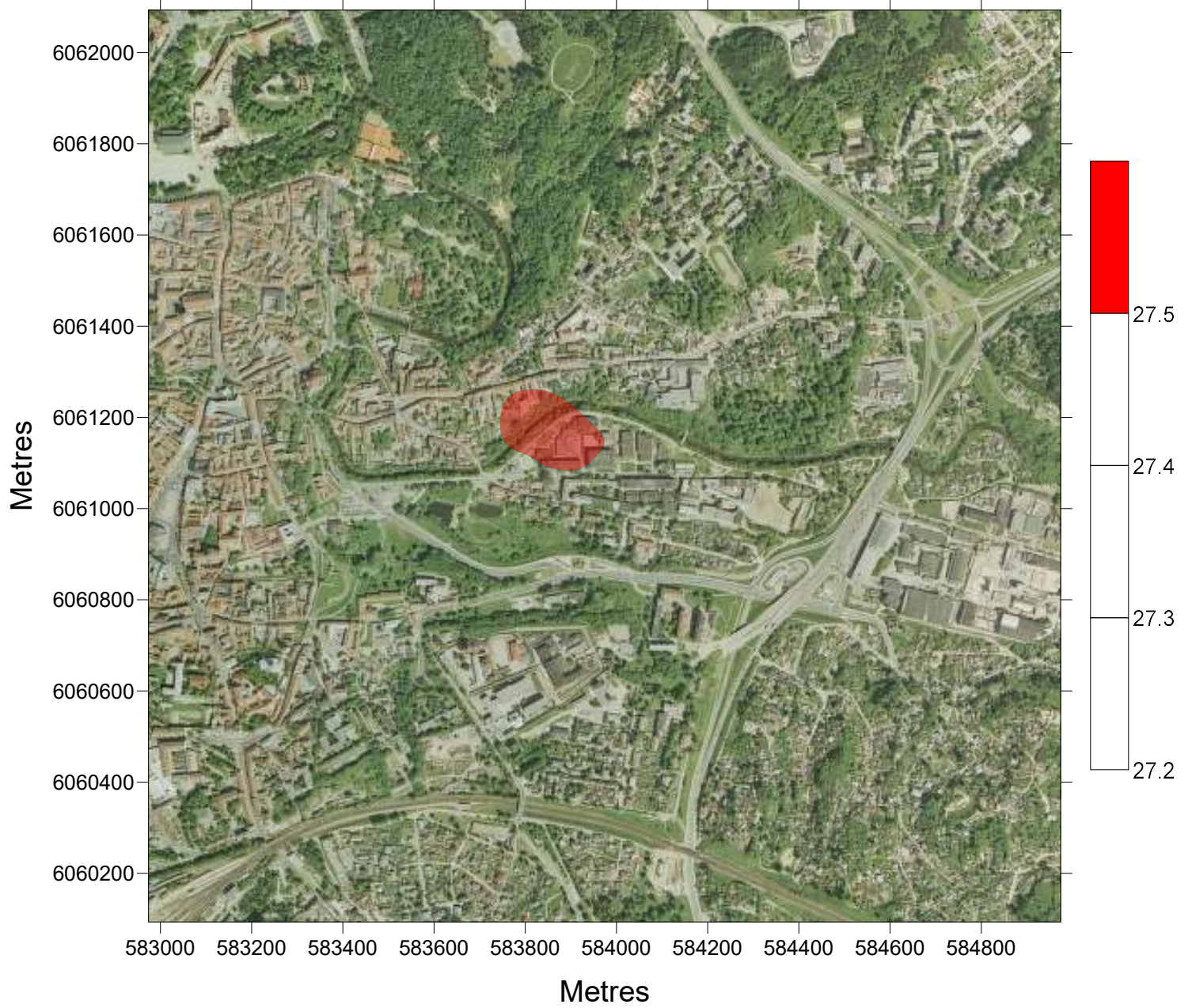
LTConc $\mu\text{g}/\text{m}^3$ KD2.5

All sourc Z=1.5m - 1hr



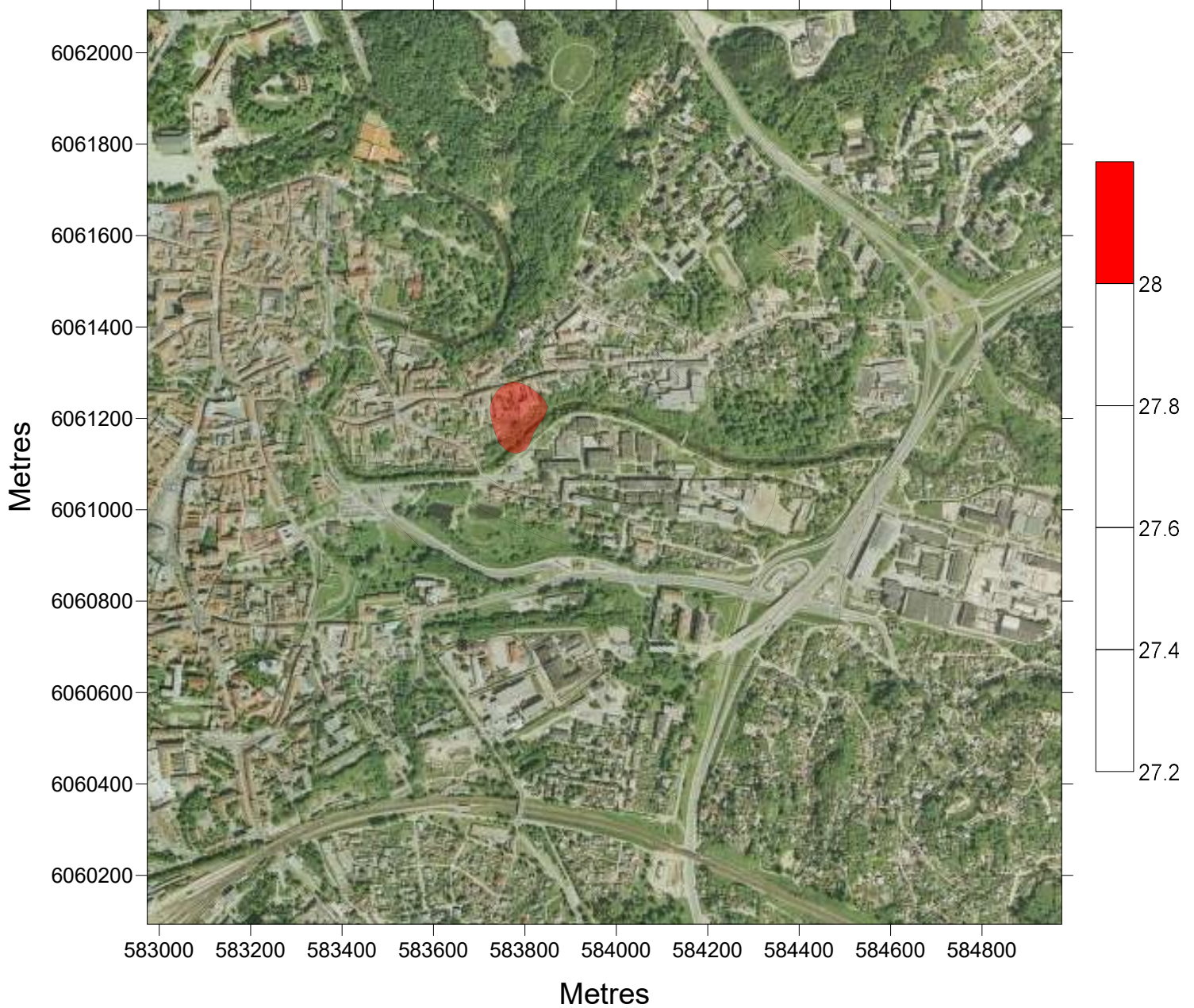
LTConc $\mu\text{g}/\text{m}^3$ KD10

All sourc Z=1.5m - 1hr



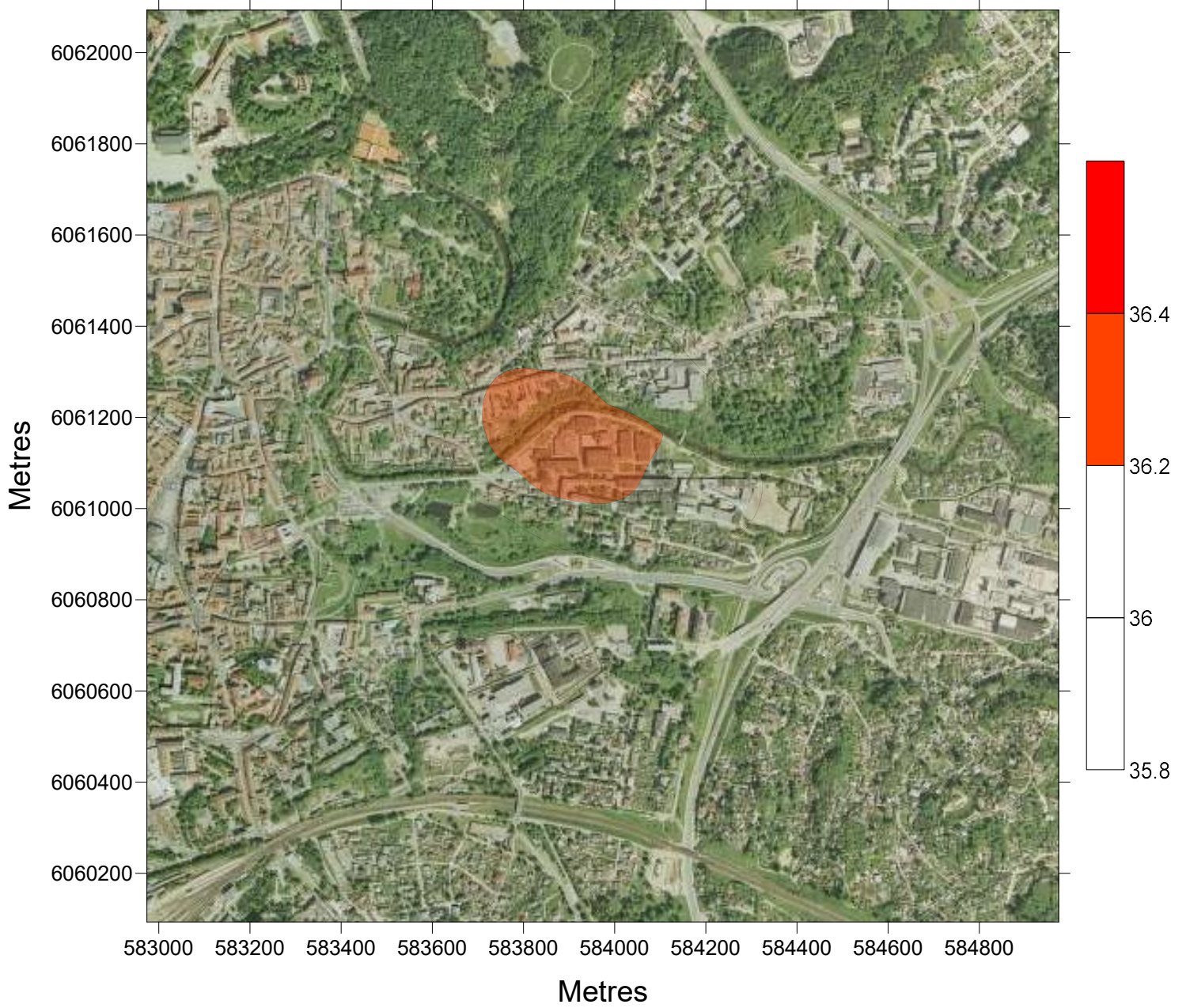
P 90.40 $\mu\text{g}/\text{m}^3$ KD10

All sourc Z=1.5m - 24hrs



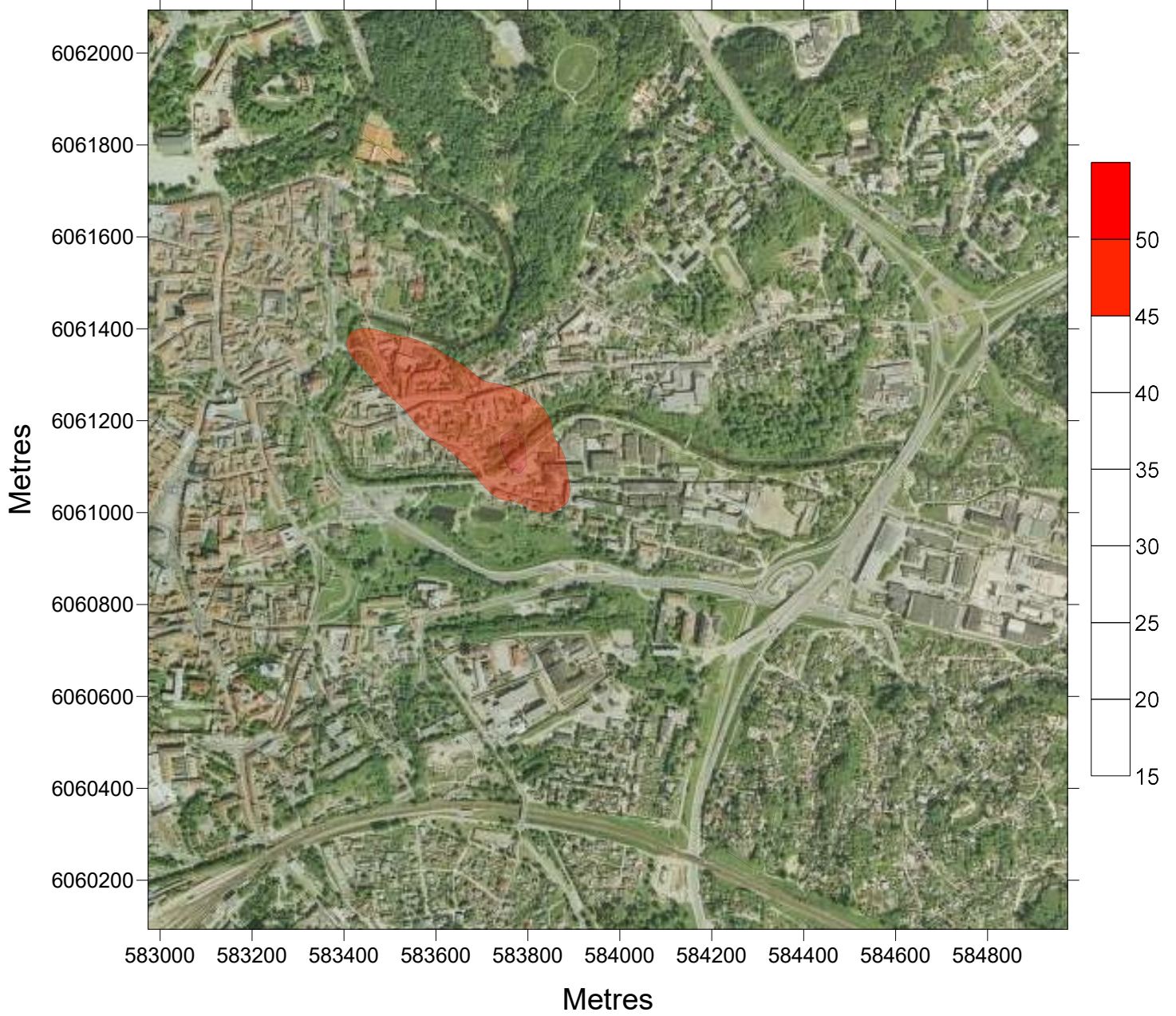
LTConc $\mu\text{g}/\text{m}^3$ NOx

All sourc Z=1.5m - 1hr



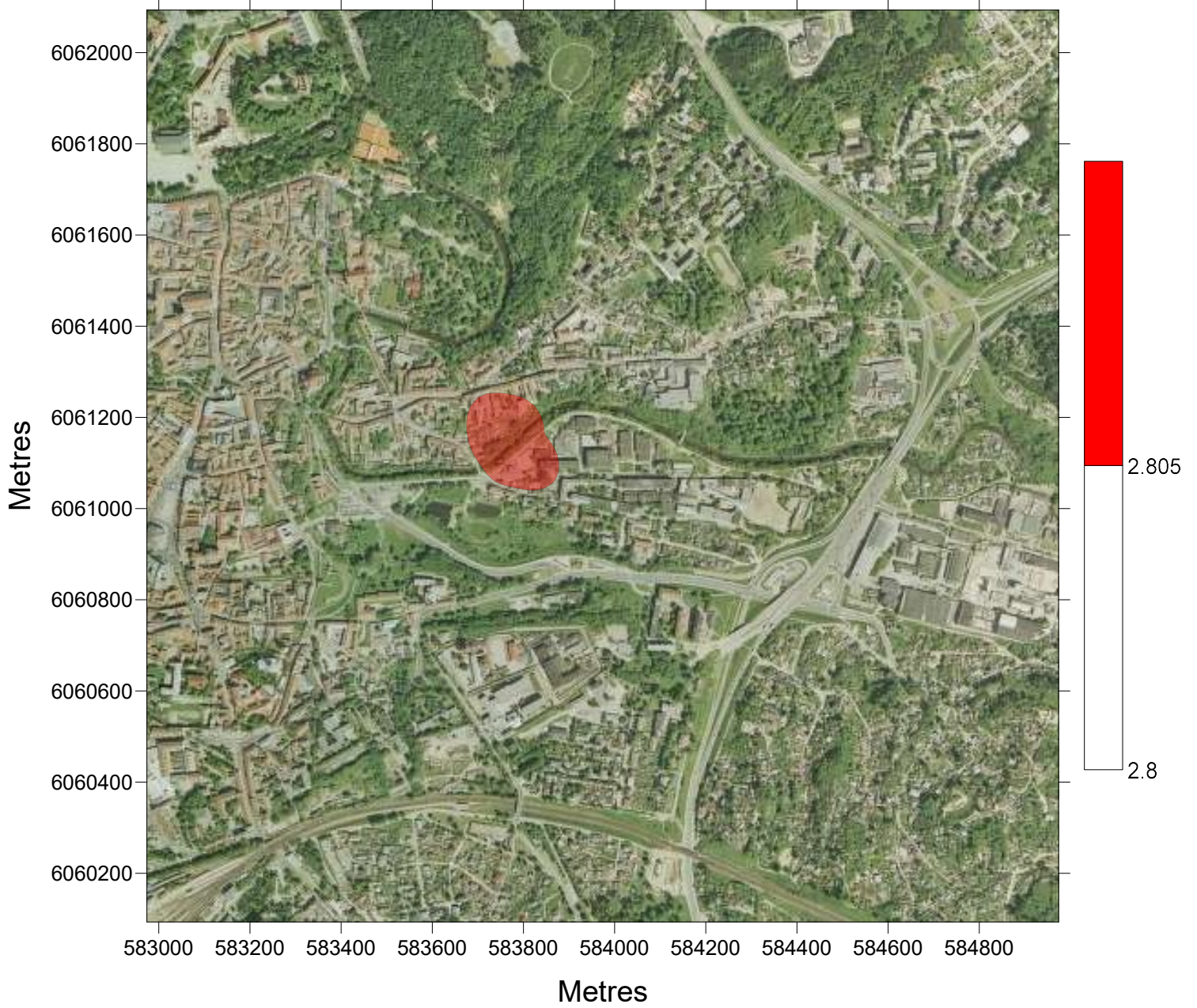
P 99.80 $\mu\text{g}/\text{m}^3$ NOx

All sourc Z=1.5m - 1hr



P 99.20 $\mu\text{g}/\text{m}^3$ SO₂

All sourc Z=1.5m - 24hrs



P 99.70 $\mu\text{g}/\text{m}^3$ SO₂

All sourc Z=1.5m - 1hr

